

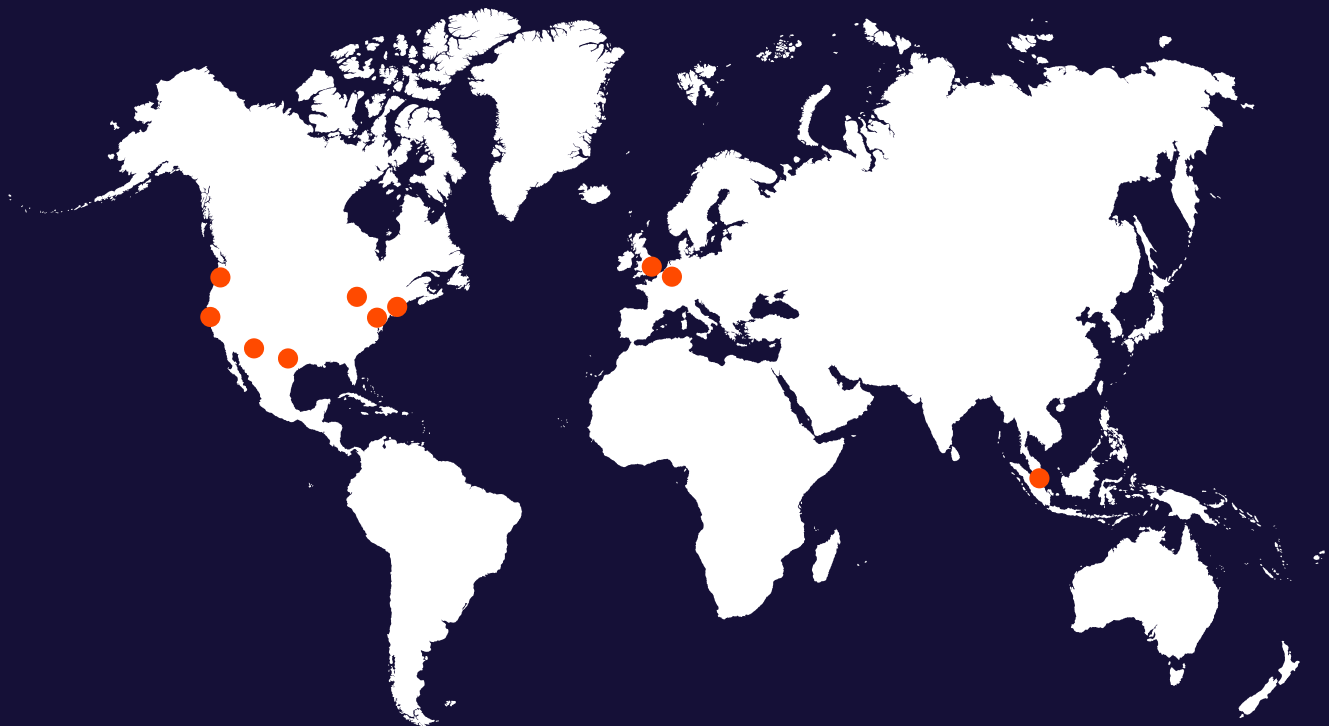
# HorizonIQ Data Centers

Infrastructure built for performance, reliability, and global scale.

HorizonIQ delivers global scale with a unified infrastructure footprint across North America, Europe, and Asia to help enterprises reduce costs, simplify vendor management, and deploy faster in critical markets. From Santa Clara to Singapore, our Tier III data centers are strategically positioned to support your regional growth, regulatory compliance, and low-latency edge services.

## Global Reach with Local Performance

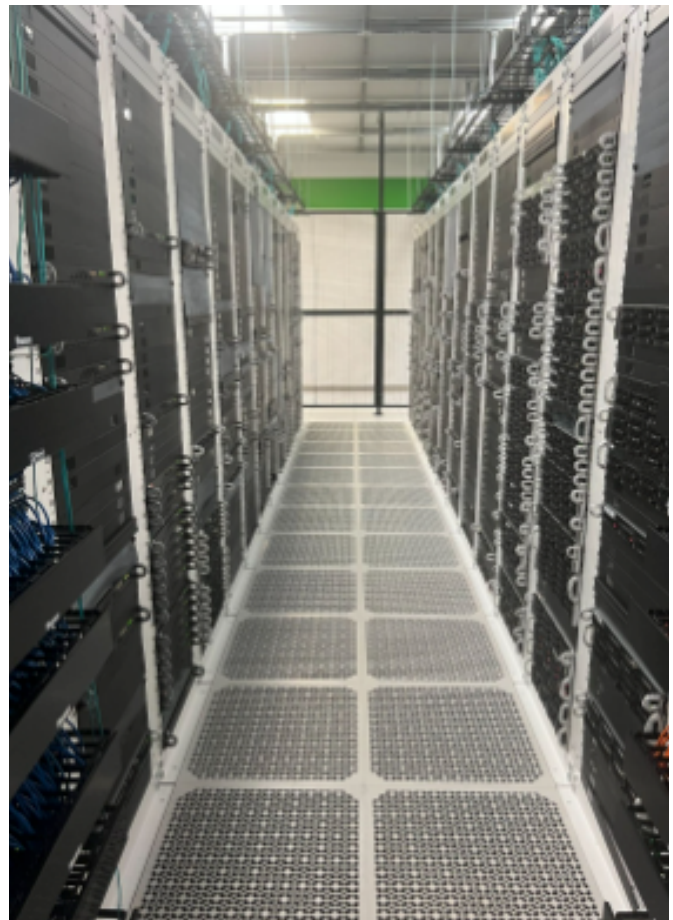
With standardized power, security, and connectivity at every location, we make it simple to deploy and manage workloads wherever your business grows. Whether expanding to new markets or streamlining vendors, our unified platform provides you with reliable performance and operational consistency worldwide.



# Data Center Specs by Facility

## US - North Central (Chicago)

HorizonIQ's Chicago facility is strategically located in Franklin Park, IL, just over 5 miles from O'Hare International Airport. This state-of-the-art facility is engineered to support mission-critical workloads with up to 600 kW of provisioned power.



### Address:

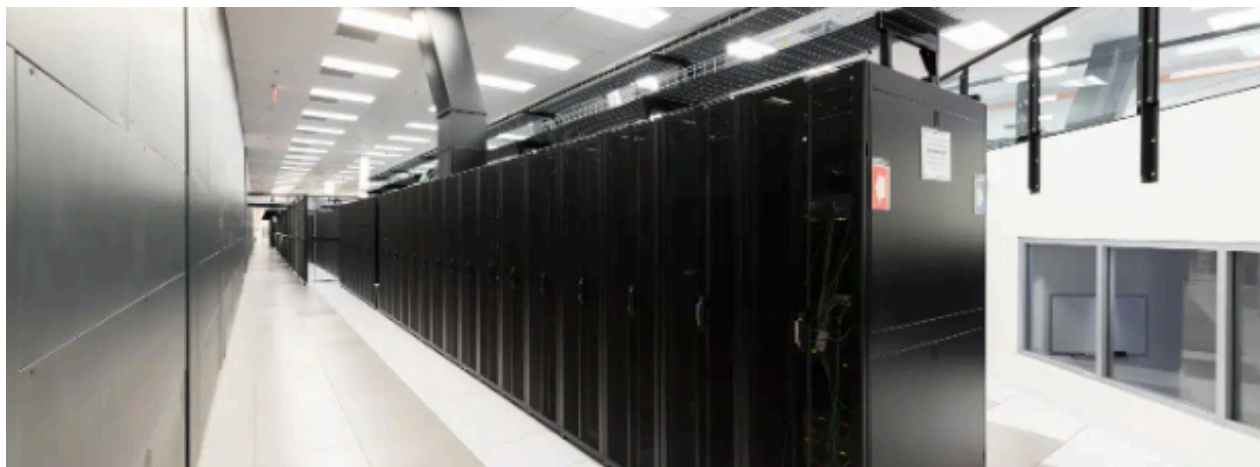
9333 W Grand Ave  
Franklin Park, IL 60131

<b>Building</b>	<ul style="list-style-type: none"> <li>• 124,700 sq.ft. total</li> <li>• Outside 500 year flood plain</li> </ul>
<b>Power</b>	<ul style="list-style-type: none"> <li>• High density cabinet configurations are available. Customer can decide how much power per cabinet to allocate.</li> <li>• UPS redundancy: 2N</li> </ul>
<b>Cooling</b>	<ul style="list-style-type: none"> <li>• Cooling redundancy: N+1</li> <li>• Cooling plant redundancy: N+1</li> </ul>
<b>Network, Fiber, and Building Entry</b>	<ul style="list-style-type: none"> <li>• Multiple diverse entrances</li> <li>• HorizonIQ offers a blended IP service. Alternatively, customers can use other carriers in the facility.</li> </ul>
<b>Security</b>	<ul style="list-style-type: none"> <li>• 24/7 onsite security personnel</li> <li>• Monitored CCTV camera systems</li> <li>• 24/7 with 93-day retention</li> <li>• Biometric card access to all spaces</li> </ul>
<b>Additional Services</b>	<ul style="list-style-type: none"> <li>• Smart Hands available for 24/7 on-site operational support including installation, management, and monitoring of your infrastructure.</li> <li>• Storage/receiving space available if needed</li> </ul>
<b>Certifications</b>	<ul style="list-style-type: none"> <li>• SOC1</li> <li>• SOC2</li> <li>• ISO-9001</li> <li>• ISO-14001</li> <li>• ISO-27001</li> <li>• PCI-DSS</li> <li>• LEED</li> <li>• Energy Star</li> </ul>

**US - North Central (Chicago)**

## US - Northeast (New Jersey)

HorizonIQ's Secaucus facility is strategically located just outside New York City, at the heart of one of the world's largest economic regions. With direct access to major financial, enterprise, and cloud hubs, this facility offers a blend of low-latency connectivity, scalable infrastructure, and stringent security.



### **Address:**

1 Enterprise Avenue N  
Secaucus, NJ 07094

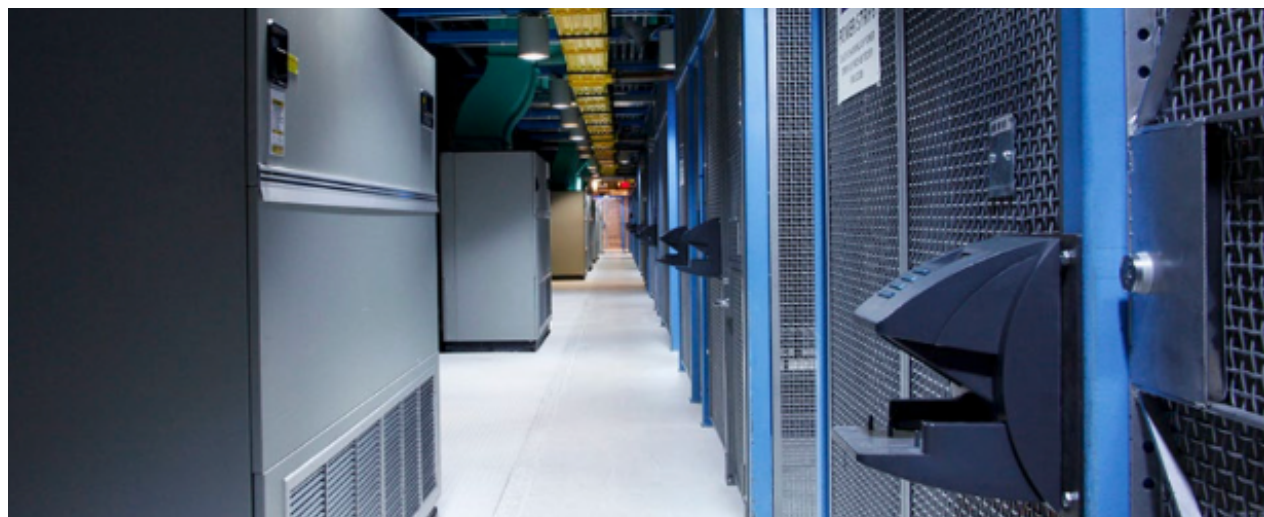


<b>Building</b>	<ul style="list-style-type: none"> <li>• 101,500 sq ft total</li> <li>• Antistatic 36" raised floor</li> <li>• Private suites and custom deployments available</li> <li>• Staging areas and breakroom access on site</li> </ul>
<b>Power</b>	<ul style="list-style-type: none"> <li>• Utility: Public Service Electric &amp; Gas (PSE&amp;G)</li> <li>• 2 diverse utility feeds with 5MW provisioned, expandable to 20MW</li> <li>• (4) 1.4MW UPS units in N+1 configuration</li> <li>• Generator backup: (4) 2MW diesel generators</li> <li>• Battery: VRLA, 10 minutes at full load</li> <li>• N+1 electrical infrastructure with harmonic filters</li> </ul>
<b>Cooling</b>	<ul style="list-style-type: none"> <li>• 4 x 400-ton chillers using chilled water cooling</li> <li>• Redundancy: N+1 with concurrent maintainability</li> <li>• Humidification and heating systems included</li> </ul>
<b>Network, Fiber, and Building Entry</b>	<ul style="list-style-type: none"> <li>• Two diverse entrance vaults</li> <li>• Carrier-neutral with connectivity to providers including AT&amp;T, Verizon, Zayo, NTT, Lumen, Cogent, Comcast, and Lightpath</li> <li>• HorizonIQ blended IP available</li> </ul>
<b>Security</b>	<ul style="list-style-type: none"> <li>• 24/7 on-site security personnel</li> <li>• CCTV with up to 90-day retention</li> <li>• HID proximity card readers with biometric and badge access</li> <li>• Intrusion detection and pre-action fire suppression</li> </ul>
<b>Additional Services</b>	<ul style="list-style-type: none"> <li>• Support available 24/7</li> <li>• Loading dock and staging area for large equipment</li> <li>• Roof rights available for antennas or direct-connect options</li> <li>• Presentation/briefing rooms available upon request</li> </ul>
<b>Certifications</b>	<ul style="list-style-type: none"> <li>• SOC 2 Type II</li> <li>• SOC 3</li> <li>• PCI-DSS</li> <li>• HIPAA</li> <li>• HECVAT</li> </ul>

**US - Northeast (New Jersey)**

## US - Mid-Atlantic (Washington, D.C.)

HorizonIQ's Ashburn facility is strategically located in the heart of Northern Virginia's Data Center Alley, one of the most densely connected and infrastructure-rich regions in the world. With low-latency access to major East Coast metros and transatlantic routes, this facility is engineered for scale, performance, and compliance.



### **Address:**

21711 Filigree Court  
Ashburn, VA 20147

<b>Building</b>	<ul style="list-style-type: none"> <li>• Multi-tenant environment with room for expansion</li> <li>• Offices, conference rooms, and customer staging areas available</li> </ul>
<b>Power</b>	<ul style="list-style-type: none"> <li>• Dual utility feeds with diverse paths for redundancy</li> <li>• Multi-megawatt backup generation with N+1/N+N configurations</li> <li>• Scalable power densities to support high-density racks and enterprise workloads</li> <li>• UPS systems provide continuous power with zone isolation</li> </ul>
<b>Cooling</b>	<ul style="list-style-type: none"> <li>• High-efficiency cooling infrastructure</li> <li>• Redundant CRAC/CRAH systems and chilled water loops</li> <li>• N+1 redundancy throughout all mechanical systems</li> <li>• Environmental and airflow controls for optimized rack performance</li> </ul>
<b>Network, Fiber, and Building Entry</b>	<ul style="list-style-type: none"> <li>• Located in one of the largest interconnection hubs in North America</li> <li>• Multiple diverse fiber entrance points</li> <li>• Direct connections available to major cloud platforms and metro networks</li> <li>• Ideal for low-latency applications with direct access to New York, Chicago, and London</li> </ul>
<b>Security</b>	<ul style="list-style-type: none"> <li>• 24/7 on-site security personnel</li> <li>• Multi-layered access controls including biometric authentication and mantraps</li> <li>• Continuous CCTV monitoring with long-term retention</li> <li>• Facility design aligns with federal and enterprise-grade security protocols</li> </ul>
<b>Additional Services</b>	<ul style="list-style-type: none"> <li>• Cross-connects and metro wave services</li> <li>• Hybrid cloud access and private connectivity options</li> <li>• On-site customer amenities including office space and meeting rooms</li> </ul>
<b>Certifications</b>	<div> <ul style="list-style-type: none"> <li>• SOC 1 Type II</li> <li>• SOC 2 Type II</li> <li>• ISO 27001</li> <li>• ISO 9001</li> <li>• ISO 14001</li> </ul> <ul style="list-style-type: none"> <li>• PCI-DSS</li> <li>• HIPAA</li> <li>• FedRAMP-aligned infrastructure and control</li> </ul> </div>

**US - Mid-Atlantic (Washington, D.C.)**

## US - South Central (Dallas)

HorizonIQ's Plano facility is located just north of Dallas in one of the country's most business-friendly metro areas. With low energy costs, strong regional infrastructure, and access to top-tier fiber networks, this facility supports high-density deployments and hybrid workloads with power, security, and scalability designed for enterprise reliability.



### **Address:**

1221 Coit Road  
Plano, TX 75075

<b>Building</b>	<ul style="list-style-type: none"> <li>• 55,000 sq. ft. total</li> <li>• Antistatic raised floor with 36" clearance</li> <li>• Two floors plus mezzanine for equipment and operations</li> <li>• Loading dock and staging area available for large shipments</li> </ul>
<b>Power</b>	<ul style="list-style-type: none"> <li>• Utility: Reliant (Oncor)</li> <li>• (2) 3MW circuits, expandable to 11MW</li> <li>• UPS: (3) APC units at 1.2MW each, N+1, expandable to 11</li> <li>• Battery: VRLA, 20 minutes at full load</li> <li>• Generator: (3) 2MW Detroit Diesel, expandable to 11</li> <li>• Full N+1 power infrastructure with harmonic filters</li> </ul>
<b>Cooling</b>	<ul style="list-style-type: none"> <li>• (3) 350-ton chilled water systems, expandable to 11</li> <li>• Cooling redundancy: N+1 with concurrent maintainability</li> <li>• Humidification and electric heating integrated</li> </ul>
<b>Network, Fiber, and Building Entry</b>	<ul style="list-style-type: none"> <li>• 2 diverse fiber entrance vaults</li> <li>• Carrier-neutral design with providers including AT&amp;T, Zayo, Cogent, Lumen, Verizon, GTT, TW Telecom, Fiberlight, and others</li> <li>• HorizonIQ blended IP available</li> </ul>
<b>Security</b>	<ul style="list-style-type: none"> <li>• 24/7 on-site security personnel</li> <li>• HID proximity card readers and biometric access</li> <li>• CCTV monitored and recorded for up to 90 days</li> <li>• Intrusion detection and multi-zone access controls</li> </ul>
<b>Additional Services</b>	<ul style="list-style-type: none"> <li>• 24/7 operational support</li> <li>• Breakroom, office space, and briefing room available</li> <li>• Roof rights and staging areas for customer deployments</li> </ul>
<b>Certifications</b>	<ul style="list-style-type: none"> <li>• SOC 2 Type II</li> <li>• SOC 3</li> <li>• PCI-DSS</li> <li>• HIPAA</li> <li>• HECVAT</li> </ul>

**US - South Central (Dallas)**



## US - Southwest (Phoenix)

HorizonIQ's Phoenix facility is located on a secure 39-acre campus just 10 minutes east of downtown. Purpose-built for scale and efficiency, this 588,669 square foot data center delivers 41 MW of power capacity and connects to a 100 Gbps dark fiber ring spanning two additional sites.



### Address:

615 North 48th Street  
Phoenix, AZ

<b>Building</b>	<ul style="list-style-type: none"> <li>• 588,669 sq. ft. total</li> <li>• Flexible deployments from single cabinets to full data halls</li> <li>• Office space, conference rooms, and customer breakroom available</li> </ul>
<b>Power</b>	<ul style="list-style-type: none"> <li>• 41 MW total power capacity</li> <li>• Utility: Arizona Public Service (APS)</li> <li>• High-density cabinet configurations up to 30 kW per rack</li> <li>• Multiple power designs with concurrent maintainability</li> <li>• Tax incentives available for qualifying Arizona data center customers</li> </ul>
<b>Cooling</b>	<ul style="list-style-type: none"> <li>• Ultra-efficient energy design with ISO 50001 compliance</li> <li>• Designed for extreme density and energy efficiency</li> <li>• 100% renewable energy with optional carbon credit programs</li> </ul>
<b>Network, Fiber, and Building Entry</b>	<ul style="list-style-type: none"> <li>• Carrier-neutral with over 40 network providers</li> <li>• 100 Gbps dark fiber ring available</li> <li>• Diverse fiber entry points</li> <li>• Metro access to AWS, Azure, and major public clouds</li> <li>• Interconnection services include cross-connects, IP transit, peering, cloud on-ramps, and metro waves</li> </ul>
<b>Security</b>	<ul style="list-style-type: none"> <li>• Highly secure campus with multiple layers of access control</li> <li>• Staffed 24/7 with monitored access points</li> <li>• Compliant with FISMA HIGH and FedRAMP physical security controls</li> </ul>
<b>Additional Services</b>	<ul style="list-style-type: none"> <li>• 24/7 support</li> <li>• Cross-connects, metro wave, and cloud on-ramp options available</li> <li>• Full migration support and local staging areas</li> <li>• Sustainability programs available for ESG-conscious workloads</li> </ul>
<b>Certifications</b>	<ul style="list-style-type: none"> <li>• SOC 2 Type II</li> <li>• SOC 3</li> <li>• ISO 9001</li> <li>• ISO 14001</li> <li>• ISO 22301</li> <li>• ISO 27001</li> <li>• ISO 50001</li> <li>• PCI-DSS</li> <li>• HIPAA</li> <li>• NIST 800-53</li> <li>• FedRAMP</li> </ul>

**US - Southwest (Phoenix)**

## US - Northwest (Seattle)

HorizonIQ's Seattle facility is located near downtown in one of the most cost-effective and environmentally efficient regions in the United States. With Washington's low industrial electricity rates, robust network presence, and access to regional and global fiber routes, this facility is designed for scalability, sustainability, and enterprise-grade reliability.



### Address:

Building 5, 3355 S 120th Pl  
Tukwila, WA 98168

Centrally located within the city's  
tech and communications corridor



<b>Building</b>	<ul style="list-style-type: none"> <li>• 100,700 sq. ft. total</li> <li>• Antistatic raised flooring with 20" clearance</li> <li>• Loading docks, staging areas, conference rooms, and dedicated storage available</li> </ul>	
<b>Power</b>	<ul style="list-style-type: none"> <li>• Utility: Seattle City Light</li> <li>• 16 power feeds totaling up to 5MW</li> <li>• Generator: (4) Cummins diesel generators at 1.5MW each</li> <li>• UPS: (4) MGE systems at 225 kVA each</li> <li>• Battery: Norstar 10-year stackable system with 8 minutes runtime</li> <li>• N+1 electrical infrastructure with harmonic filtering</li> </ul>	
<b>Cooling</b>	<ul style="list-style-type: none"> <li>• (20) 30-ton CRAC units</li> <li>• XD cooling with water-side economizer for energy efficiency</li> <li>• N+1 cooling redundancy</li> <li>• Mechanical water-side humidification</li> </ul>	
<b>Network, Fiber, and Building Entry</b>	<ul style="list-style-type: none"> <li>• Carrier-neutral with access to providers including AT&amp;T, Verizon Business, Zayo, Cogent, CenturyLink, Lumen, and Frontier</li> <li>• Two diverse fiber entrance vaults</li> <li>• Direct connectivity to major metro fiber rings and long-haul routes to Silicon Valley and Chicago</li> <li>• Ideal for low-latency peering and hybrid cloud deployments</li> </ul>	
<b>Security</b>	<ul style="list-style-type: none"> <li>• 24/7 on-site security personnel</li> <li>• 16 CCTV motion-detection cameras with up to 90-day retention</li> <li>• HID proximity card readers and biometric access</li> <li>• Intrusion detection and multi-zone access control</li> </ul>	
<b>Additional Services</b>	<ul style="list-style-type: none"> <li>• Support available for remote deployment and management</li> <li>• Pre-action/dry-pipe fire suppression across four detection zones</li> <li>• Showers, breakroom, and private storage areas for extended deployments</li> <li>• Presentation and collaboration spaces available on-site</li> </ul>	
<b>Certifications</b>	<ul style="list-style-type: none"> <li>• SOC 2 Type II</li> <li>• HIPAA</li> <li>• PCI-DSS</li> <li>• SSAE 18</li> </ul>	<ul style="list-style-type: none"> <li>• ISAE 3402</li> <li>• LEED</li> <li>• Energy Star</li> </ul>

**US - Northwest (Seattle)**

## US - West (Silicon Valley)

HorizonIQ's Santa Clara facility is strategically located at the heart of Silicon Valley, surrounded by some of the world's largest technology firms. Built on a power-dense, modular design and fed by both PG&E and Silicon Valley Power, the facility provides high availability and flexibility for enterprise and hyperscale workloads.



### **Address:**

2151 Mission College Blvd  
Santa Clara, CA 95054



<b>Building</b>	<ul style="list-style-type: none"> <li>• 36,000 sq. ft. total</li> <li>• Antistatic raised flooring with 24" clearance</li> <li>• Two floors with mezzanine for flexible deployment</li> <li>• Office space, breakroom, and briefing room available</li> </ul>	
<b>Power</b>	<ul style="list-style-type: none"> <li>• Utility: Silicon Valley Power with dual substation feeds</li> <li>• (4) Caterpillar diesel generators at 1.5MW each</li> <li>• (5) Liebert UPS systems at 750 kVA</li> <li>• C&amp;D 20-year VRLA stackable battery system with 12-minute runtime</li> <li>• Fully redundant A&amp;B electrical feeds with harmonic filters</li> </ul>	
<b>Cooling</b>	<ul style="list-style-type: none"> <li>• DX condensed water system with CRAC-based infrared monitoring</li> <li>• (2) 1100-ton cooling towers</li> <li>• N+1 cooling redundancy</li> <li>• Gas boiler heating and mechanical humidification</li> </ul>	
<b>Network, Fiber, and Building Entry</b>	<ul style="list-style-type: none"> <li>• Carrier-neutral facility with providers including AT&amp;T, Zayo, Cogent, Abovenet, SVP Fiber, and others</li> <li>• Two diverse fiber entrance vaults</li> <li>• Direct connections to Bay Area data centers for low-latency regional peering</li> <li>• Dense IP transit mix including Telia, NTT, Global Crossing, Inteliquent, and Savvis</li> </ul>	
<b>Security</b>	<ul style="list-style-type: none"> <li>• 24/7 on-site security personnel</li> <li>• 46 indoor and 16 outdoor CCTV cameras with 90-day retention</li> <li>• HID proximity card readers with biometric access controls</li> <li>• Intrusion detection systems and multi-zone security layers</li> </ul>	
<b>Additional Services</b>	<ul style="list-style-type: none"> <li>• 24/7 Support</li> <li>• Loading docks and staging area for customer equipment</li> <li>• Showers, meeting rooms, and storage for extended operations</li> </ul>	
<b>Certifications</b>	<ul style="list-style-type: none"> <li>• SOC 2 Type II</li> <li>• SOC 3</li> <li>• PCI-DSS</li> <li>• HIPAA</li> <li>• HECVAT</li> </ul>	<ul style="list-style-type: none"> <li>• ISO 27001</li> <li>• ISO 9001</li> <li>• ISO 14001</li> </ul>

**US - West (Silicon Valley)**

## Asia - Southeast (Singapore)

HorizonIQ's Singapore facility is strategically located at Technopark @ Chai Chee, just 20 minutes from Changi Airport and ideal for enterprises expanding into Asia. Built to Tier III+ standards and operated in partnership with KDDI, the facility delivers resilient power, carrier-neutral connectivity, and advanced climate controls.



### **Address:**

Block 750D, Chai Chee Road  
Technopark at Chai Chee  
Singapore 469001

<b>Building</b>	<ul style="list-style-type: none"> <li>• 19,375 sq. ft. total</li> <li>• 600mm raised flooring throughout with anti-static coating</li> <li>• Floor load capacity: 824 kg/m<sup>2</sup></li> </ul>	
<b>Power</b>	<ul style="list-style-type: none"> <li>• Standard power per rack: 2.5kVA (max 5kVA)</li> <li>• Two independent utility feeds from different power stations</li> <li>• 2N UPS systems with 15-minute backup capacity</li> <li>• N+1 oil-driven generators with 24-hour continuous runtime</li> <li>• Average power density: 860W/m<sup>2</sup> (max: 1640W/m<sup>2</sup>)</li> </ul>	
<b>Cooling</b>	<ul style="list-style-type: none"> <li>• High-volume air conditioning systems</li> <li>• N+2 climate control redundancy</li> <li>• Continuous humidity and temperature regulation</li> <li>• Environmental monitoring with real-time alerting</li> </ul>	
<b>Network, Fiber, and Building Entry</b>	<ul style="list-style-type: none"> <li>• Carrier-neutral with connectivity to multiple domestic and international providers</li> <li>• Direct international circuit access via on-site KDDI infrastructure</li> <li>• Ideal for customers requiring low-latency regional connectivity</li> </ul>	
<b>Security</b>	<ul style="list-style-type: none"> <li>• 24/7 on-site security personnel</li> <li>• CCTV surveillance throughout the facility with full coverage</li> <li>• Biometric vein pattern scanners</li> <li>• Single-point access to prevent tailgating</li> </ul>	
<b>Additional Services</b>	<ul style="list-style-type: none"> <li>• 24/7 NOC operations and bilingual helpdesk support</li> <li>• Free meeting rooms, Wi-Fi, tool rental, and secure engineer storage</li> <li>• Business continuity services: impact analysis, planning, training, and management</li> <li>• Disaster recovery services: system recovery, backup, and escrow</li> <li>• Office and IT relocation services via KDDI Singapore</li> </ul>	
<b>Certifications</b>	<ul style="list-style-type: none"> <li>• Tier III+ design</li> <li>• PCI-DSS</li> <li>• HIPAA</li> </ul>	<ul style="list-style-type: none"> <li>• SOC 2 Type II</li> <li>• SOC 3</li> <li>• HECVAT</li> </ul>

**Asia - Southeast (Singapore)**

## Europe - Northwest (London)

HorizonIQ's Welwyn Facility is located just 20 miles north of Central London, offering up to 40MW of customer power across a modular, Tier III-aligned design. With energy-efficient cooling (PUE 1.2) and strong network access via 8 on-site carriers, this facility supports both enterprise and wholesale tenants seeking scale, performance, and sustainability.



### **Address:**

20 Black Fan Road,  
Welwyn Garden City  
AL7 1, England

<b>Building</b>	<ul style="list-style-type: none"> <li>• 200,000 sq. ft. total</li> <li>• Up to 30 modular data halls (28 active)</li> <li>• Flexible rack configurations: full, half, and quarter-racks available</li> </ul>	
<b>Power</b>	<ul style="list-style-type: none"> <li>• Total customer power capacity: 40MW</li> <li>• Up to 3MW per data hall (500 sq m each)</li> <li>• Standard rack density: 5kW per rack, scalable to high-density deployments</li> <li>• Tier III-aligned power redundancy with diverse feeds</li> <li>• Target PUE of 1.2 for maximum energy efficiency</li> </ul>	
<b>Cooling</b>	<ul style="list-style-type: none"> <li>• Adiabatic and free-air cooling systems (replacing legacy water-based cooling)</li> <li>• Dedicated cooling plant per data hall pair</li> <li>• Optimized for low-impact energy performance</li> </ul>	
<b>Network, Fiber, and Building Entry</b>	<ul style="list-style-type: none"> <li>• Carrier-neutral facility with eight on-site fiber providers</li> <li>• Multiple underground fiber paths for redundancy</li> <li>• Strong regional and international connectivity options</li> </ul>	
<b>Security</b>	<ul style="list-style-type: none"> <li>• 24/7 on-site security personnel</li> <li>• Multi-layer access control protocols</li> <li>• Tiered entry points and monitored physical access systems</li> </ul>	
<b>Additional Services</b>	<ul style="list-style-type: none"> <li>• 24/7 remote support available</li> <li>• 24/7 customer access to the facility</li> </ul>	
<b>Certifications</b>	<ul style="list-style-type: none"> <li>• ISO 27001</li> <li>• ISO 14001</li> <li>• ISO 9000</li> </ul>	<ul style="list-style-type: none"> <li>• SOC 2 Type II</li> <li>• Uptime Institute M&amp;O Certified</li> </ul>

**Europe - Northwest (London)**



## Europe - West (Amsterdam)

HorizonIQ's Amsterdam facility is located within the Schiphol-Rijk technology corridor, just 10 km from Schiphol International Airport. Designed to Tier III+ standards, this highly connected site offers 2N power redundancy, N+1 cooling, and direct access to over 30 carriers. Powered entirely by renewable energy, it's an ideal solution for enterprises expanding into Europe.



### **Address:**

AMS3 - Schiphol Campus  
Schiphol-Rijk, Netherlands

<b>Building</b>	<ul style="list-style-type: none"> <li>• 32,000 sq. ft. total</li> <li>• Flexible cabinet, cage, and cold aisle containment options</li> <li>• Staging areas, meeting rooms, and office space available</li> <li>• On-site parking and free electric car charging</li> </ul>
<b>Power</b>	<ul style="list-style-type: none"> <li>• 2N UPS power configuration</li> <li>• N+1 generator backup with 24 hours of fuel on-site</li> <li>• Full AC and DC current ranges available</li> <li>• SLA-backed 99.999% power availability</li> </ul>
<b>Cooling</b>	<ul style="list-style-type: none"> <li>• N+1 CRAC units per customer room</li> <li>• ASHRAE-compliant temperature and humidity SLAs</li> <li>• Advanced energy-efficient cooling systems</li> <li>• PUE optimized for sustainability</li> </ul>
<b>Network, Fiber, and Building Entry</b>	<ul style="list-style-type: none"> <li>• Carrier-neutral with 30+ providers and NL-IX exchange access</li> <li>• Dual-entry fiber paths and redundant patch panels</li> <li>• Metro Connect: 100 Gbps to Digital Realty Science Park and other sites</li> <li>• Private Cloud Connect options to major cloud platforms</li> </ul>
<b>Security</b>	<ul style="list-style-type: none"> <li>• 24/7 on-site security personnel</li> <li>• Multi-layered access control with proximity cards and biometrics</li> <li>• Full CCTV coverage across the facility</li> <li>• State-of-the-art alarm and environmental monitoring systems</li> </ul>
<b>Additional Services</b>	<ul style="list-style-type: none"> <li>• Support available 24/7</li> <li>• Hands &amp; Eyes support for installation and emergency interventions</li> <li>• Storage and unpacking areas for customer hardware</li> <li>• Multilingual European Customer Support Center (ECSC)</li> </ul>
<b>Certifications</b>	<ul style="list-style-type: none"> <li>• ISO 27001 (Information Security)</li> <li>• ISO 22301 (Business Continuity)</li> <li>• SOC 2 Type II</li> <li>• PCI-DSS</li> <li>• Subject to regular internal and external financial audits</li> </ul>

**Europe - West (Amsterdam)**



# The HorizonIQ Difference

Your global reach starts here.

## **100% Uptime SLA**

Deploy where you need help the most across a variety of regions in three continents, and get peace of mind with our 100% infrastructure and network uptime guarantee.

## **Predictable Pricing**

Unburden yourself from unpredictable infrastructure costs. HorizonIQ's single-tenant infrastructure is priced at a flat monthly rate, giving you true cost consistency and no surprise charges.

## **Cost Efficiency**

Achieve up to 70% cost savings with our proprietary tools, optimized pricing models, and cost-efficient private cloud, bare metal, and GPU server solutions.

## **Proactive Management**

Our Compass portal provides real-time visibility, cost control, and automated infrastructure management-giving you full control over your IT environment.